

FORTIS 3in1 IP66 LED module



iLumTechTM
Innovation ahead

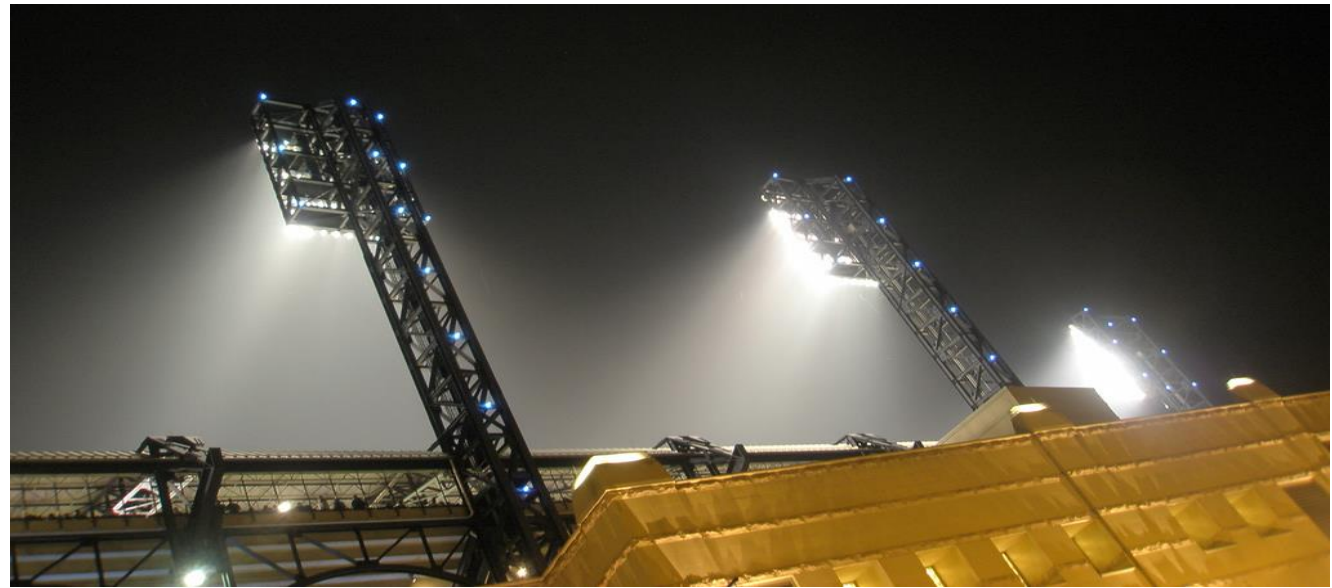
General specification

- Fortis 3in1 IP66 is a ready-to-use LED module, ideally designed and combined optical, electronic and thermo-mechanical parameters
- Suitable for implementation to a new luminaire, individually as an unit or available with accesories for installation
- Powerfull, highly efficient and extra durable predicted for use in demanding conditions where high IP rating and high lumen output are required



Applications

- Engineered for arena lighting applications, excellent in wide area, high & low-bay and general lighting applications, outdoor and indoor, as well as floodlight and portable lighting applications
- Sporting facilities, arenas, stadiums and any event area, large yards, workplaces, wide public places
- Industrial and commercial buildings, indoor & outdoor



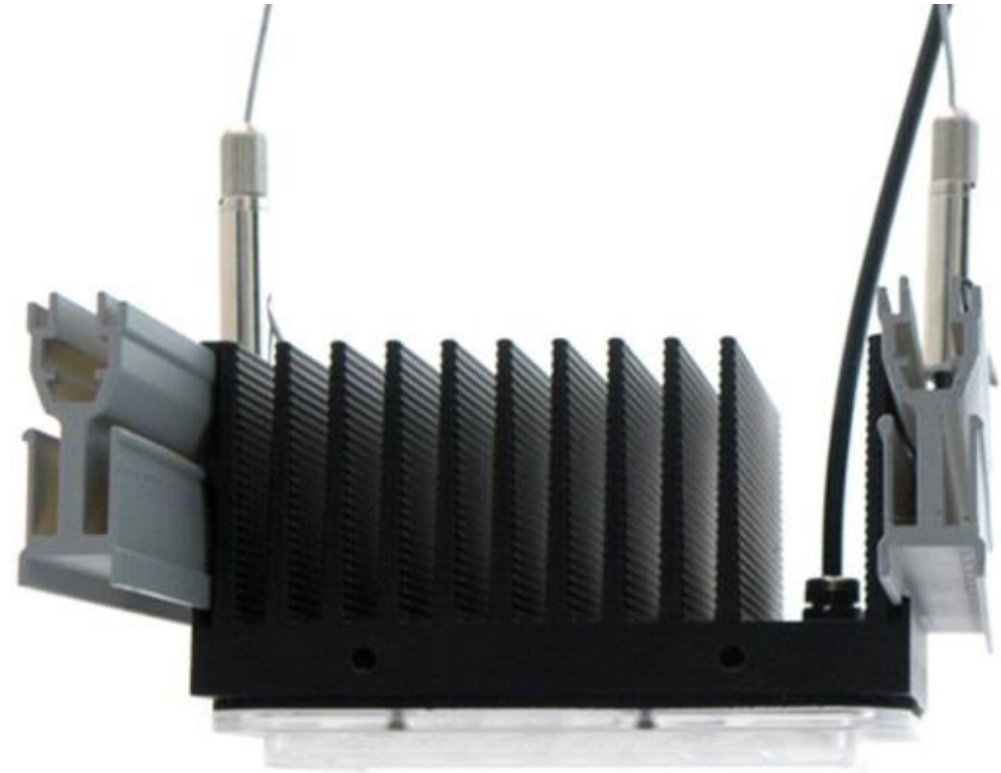
Applications

- Emergency operations areas: road and urban works area; light towers; portable lighting; portable pedestals
- General Lighting in wide areas: canopy, petrol gas station, parking light, facade lighting, high-bay, hospitality lighting
- Construction and manufacturing areas, warehouse lighting, parking area, residential light, garden light, security lighting etc.



Key features

- Durable and high efficient industrial module
- Flexible connection system
- 7 different light distributions
- Small form factor (110 x 121 x 71 mm)
- Very light (1050 g / module)
- Weatherproof IP66
- UV Protected optics
- Driver and driving current up to customer needs



Technical Performances

- Power consumption: up to 73W
- Luminous flux: up to 9,800 lm
- Efficacy: up to 161 lm/W
(without driver)
- CCT: 5000 K, 4000 K, 3000 K
- CRI: 80, 70
- Lifetime:
L80 B20 @ 92,000 h (700mA)
L80 B20 @ 195,000 h (350mA)
- Max. Ta: 55° C

CCT (K)	Optical variant	Ta (°C)	CRI	Nominal current (mA)	typ power (W) @ Ta 25°C	typ flux (lm) @ Ta 25°C	Typ efficacy (lm/W) @ Ta 25°C	Beam angle	
3000K	FORTIS IP66 NA	25	70	350	35	5250	150	22°	
				700	73	9050	124		
			80	350	35	4600	131		
				700	73	7900	108		
	FORTIS IP66 ME		70	350	35	5200	149	24°	
				700	73	8950	123		
			80	350	35	4550	130		
				700	73	7800	107		
	FORTIS IP66 WI		70	350	35	5000	143	28°	
				700	73	8600	118		
			80	350	35	4350	124		
				700	73	7500	103		
	FORTIS IP66 EW		70	350	35	4850	139	48°	
				700	73	8350	114		
			80	350	35	4250	121		
				700	73	7250	99		
	FORTIS IP66 EL		70	350	35	5000	143	20°/40°	
				700	73	8600	118		
			80	350	35	4400	126		
				700	73	7500	103		
	FORTIS IP66 CV		70	350	35	5050	144	125°	
				700	73	8700	119		
			80	350	35	4450	127		
				700	73	7600	104		
	FORTIS IP66 OV		70	350	35	3900	111	110°	
				700	73	6700	92		
			80	350	35	3400	97		
				700	73	5850	80		

Technical Performances

CCT (K)	Optical variant	Ta (°C)	CRI	Nominal current (mA)	typ power (W) @ Ta 25°C	typ flux (lm) @ Ta 25°C	Typ efficacy (lm/W) @ Ta 25°C	Beam angle	
4000K	FORTIS IP66 NA	25	70	350	35	5650	161	22°	
				700	73	9700	133		
			80	350	35	4850	139		
				700	73	8300	114		
	FORTIS IP66 ME		70	350	35	5600	160	24°	
				700	73	9650	132		
			80	350	35	4800	137		
				700	73	8250	113		
	FORTIS IP66 WI		70	350	35	5350	153	28°	
				700	73	9200	126		
			80	350	35	4600	131		
				700	73	7850	108		
	FORTIS IP66 EW		70	350	35	5200	149	48°	
				700	73	8950	123		
			80	350	35	4450	127		
				700	73	7650	105		
	FORTIS IP66 EL		70	350	35	5400	154	20°/40°	
				700	73	9250	127		
			80	350	35	4600	131		
				700	73	7900	108		
	FORTIS IP66 CV		70	350	35	5450	156	125°	
				700	73	9350	128		
			80	350	35	4650	133		
				700	73	7800	107		
	FORTIS IP66 OV		70	350	35	4200	120	110°	
				700	73	7200	99		
			80	350	35	3600	103		
				700	73	6150	84		

CCT (K)	Optical variant	Ta (°C)	CRI	Nominal current (mA)	typ power (W) @ Ta 25°C	typ flux (lm) @ Ta 25°C	Typ efficacy (lm/W) @ Ta 25°C	Beam angle	
5000K	FORTIS IP66 NA	25	70	350	35	5550	159	22°	
				700	73	9800	134		
			80	350	35	4800	137		
				700	73	8500	116		
	FORTIS IP66 ME		70	350	35	5500	157	24°	
				700	73	9700	133		
			80	350	35	4750	136		
				700	73	8450	116		
	FORTIS IP66 WI		70	350	35	5250	150	28°	
				700	73	9250	127		
			80	350	35	4550	130		
				700	73	8050	110		
	FORTIS IP66 EW		70	350	35	5100	146	48°	
				700	73	9000	123		
			80	350	35	4450	127		
				700	73	7850	108		
	FORTIS IP66 EL		70	350	35	5250	150	20°/40°	
				700	73	9300	127		
			80	350	35	4600	131		
				700	73	8100	111		
	FORTIS IP66 CV		70	350	35	5350	153	125°	
				700	73	9400	129		
			80	350	35	4650	133		
				700	73	8200	112		
	FORTIS IP66 OV		70	350	35	4100	117	110°	
				700	73	7250	99		
			80	350	35	3550	101		
				700	73	6300	86		

Optical variants

NA 22°

ME 24°

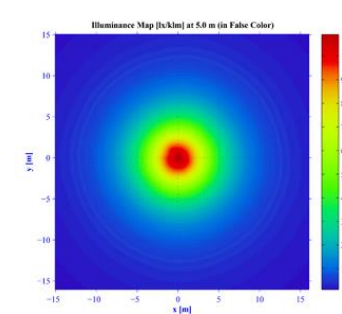
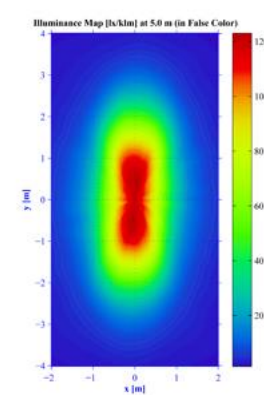
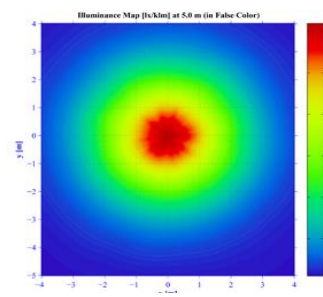
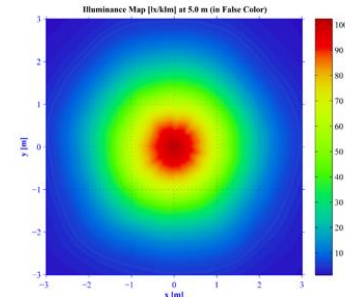
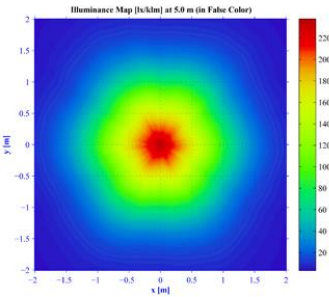
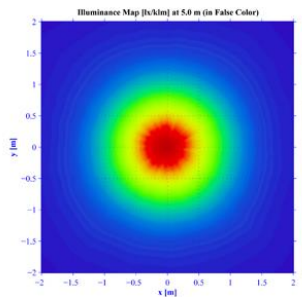
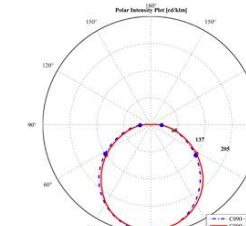
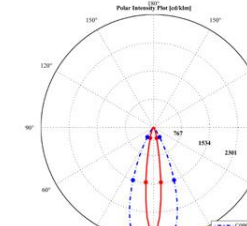
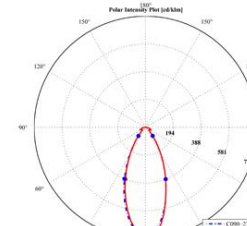
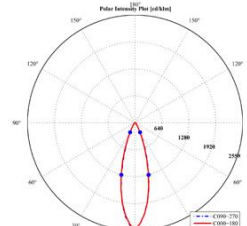
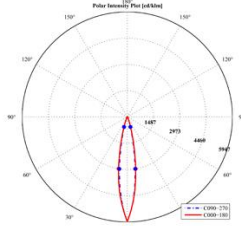
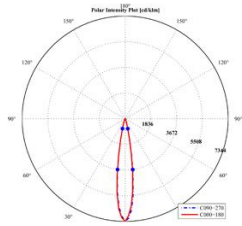
WI 28°

EW 48°

EL (20° x 40°)

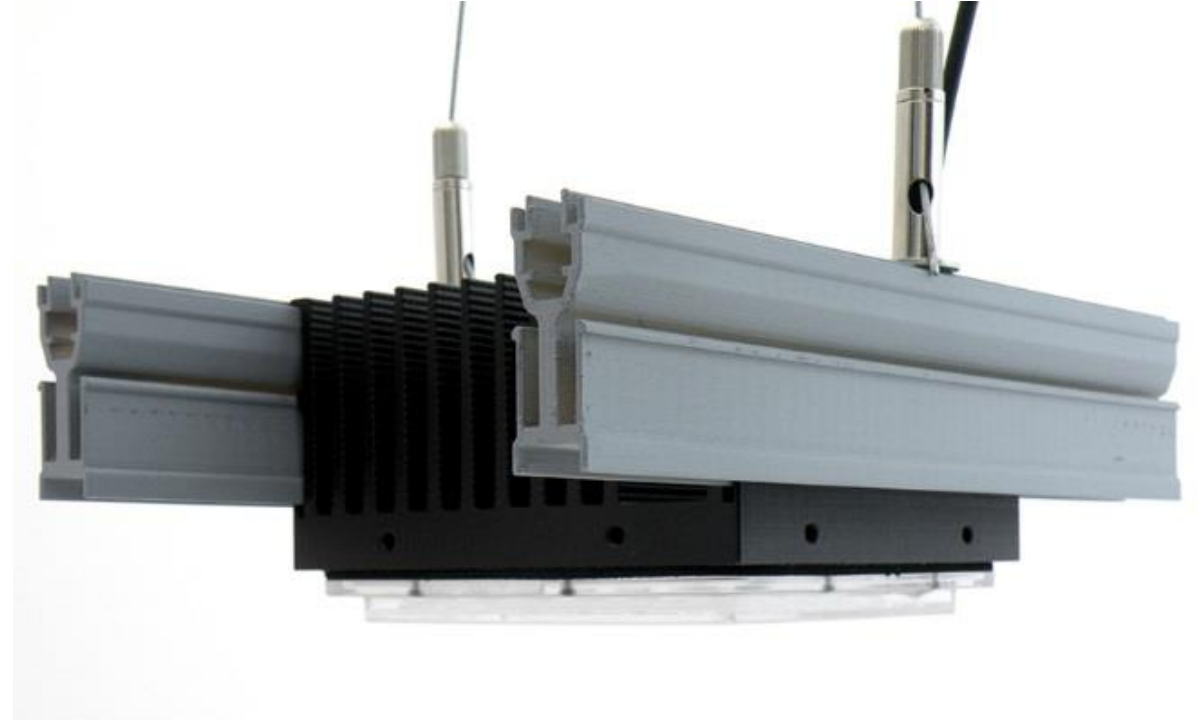
CV (125°)

CVOPAL (110°)



Material specifications

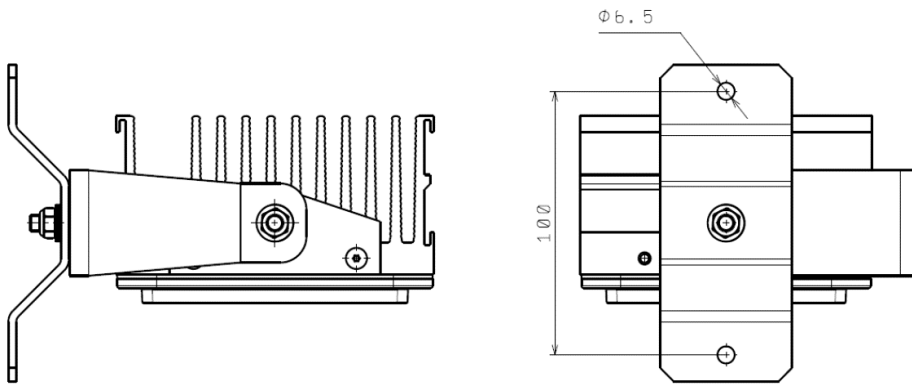
- Heatsink: anodized protected extruded AL
- PCB: Metal core PCB Bergquist
- LED: Nichia Hi-power LED 219C (6 x 6 LED)
- Gasket: silicon
- Lens: optical grade PMMA HT specific for high temperature resistance up to 125°
- UV protected, high level of transmission for 30 years



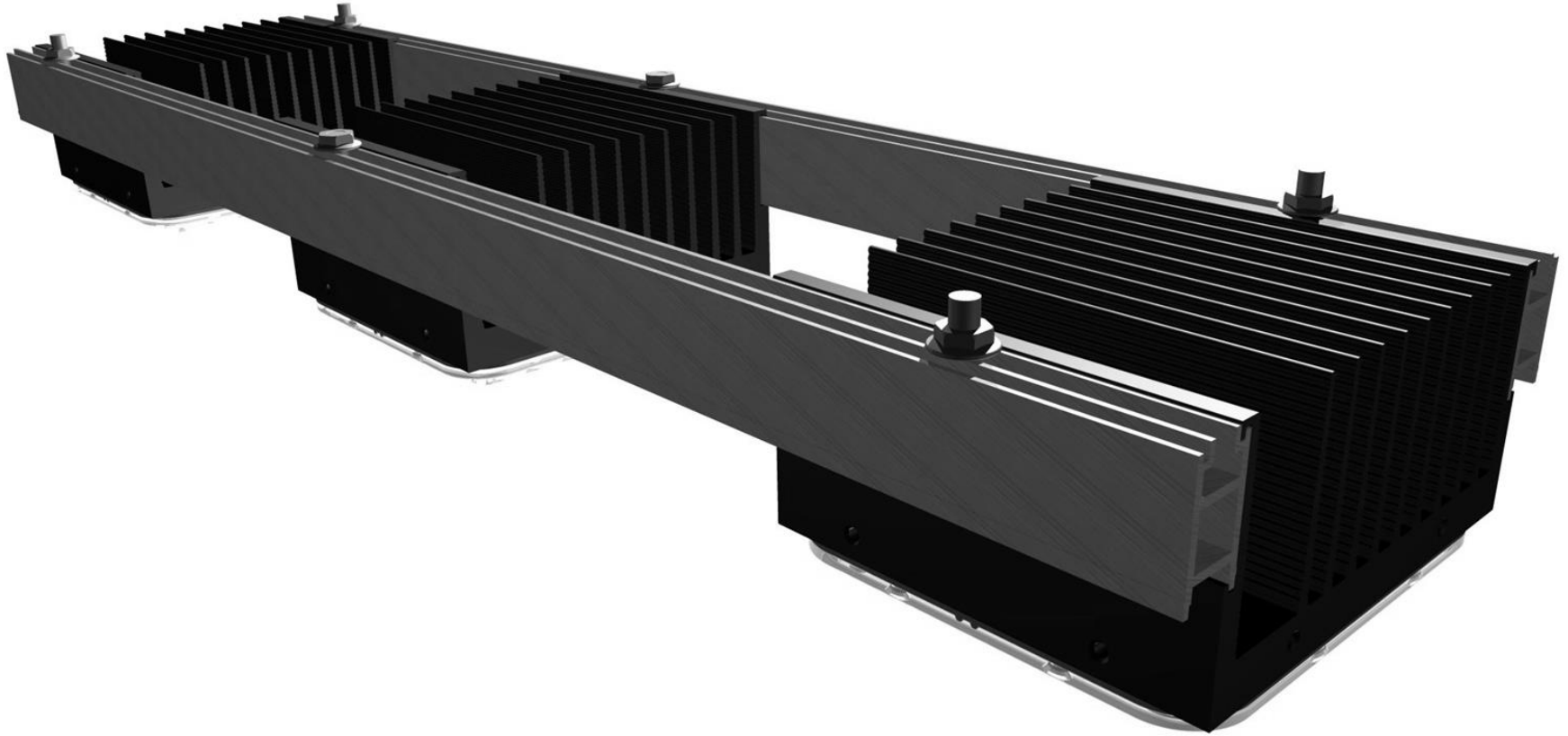
Accessories

Holder for the module on the wall / mast

- Vertical and horizontal rotation
- Allows for positioning of the module and light beam as it is required in the application



Accessories



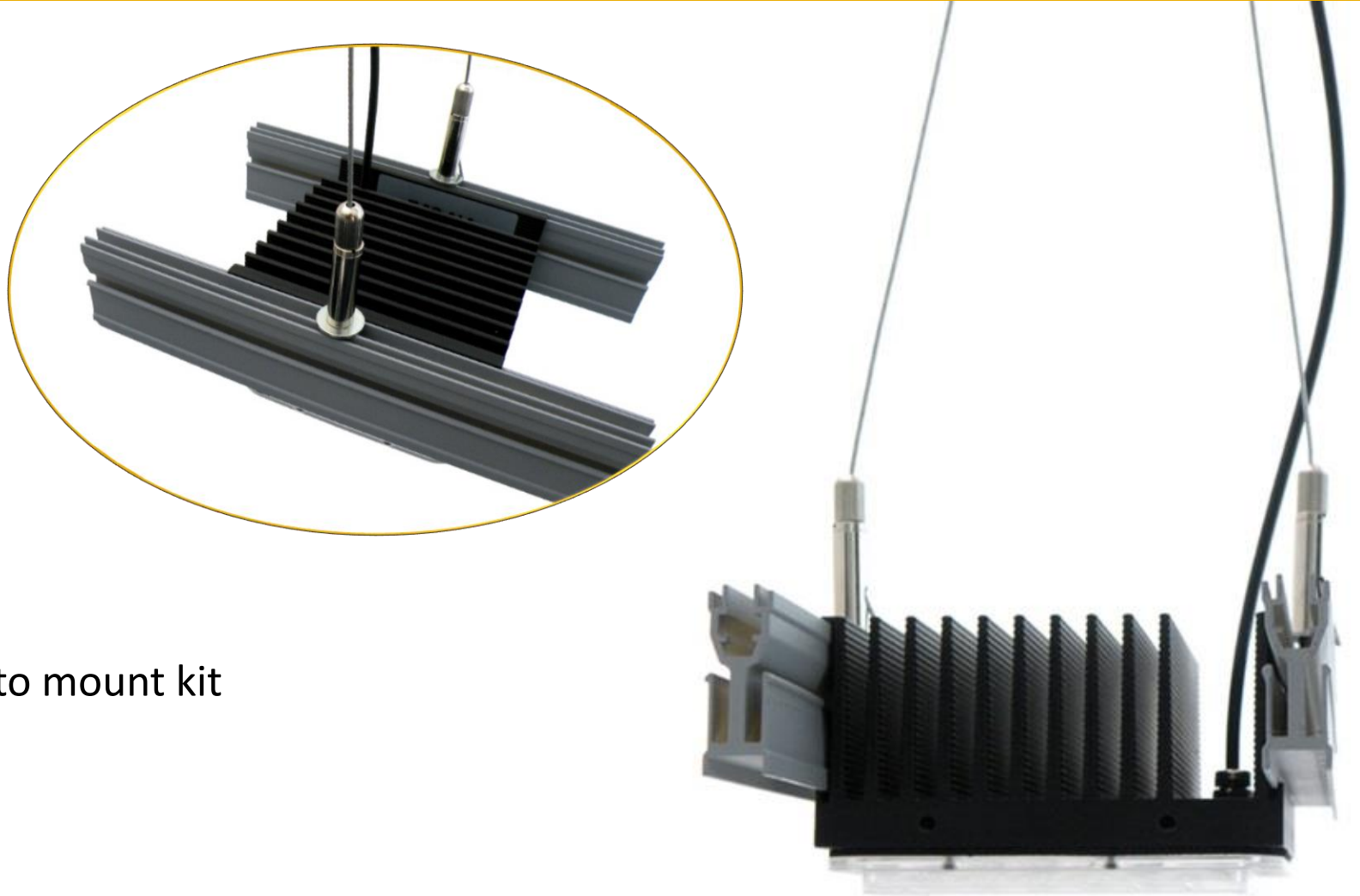
Aluminium rails

- For suspension or wall mounting
- Standard length 0.6 m, 1.2 m (different lengths on request)
- Easy and variable installation of modules and suspensions

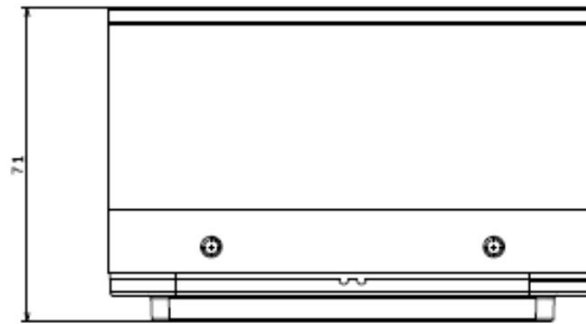
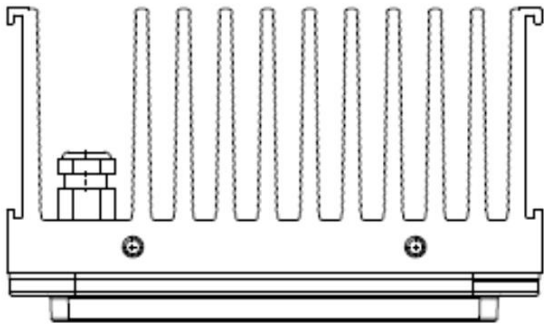
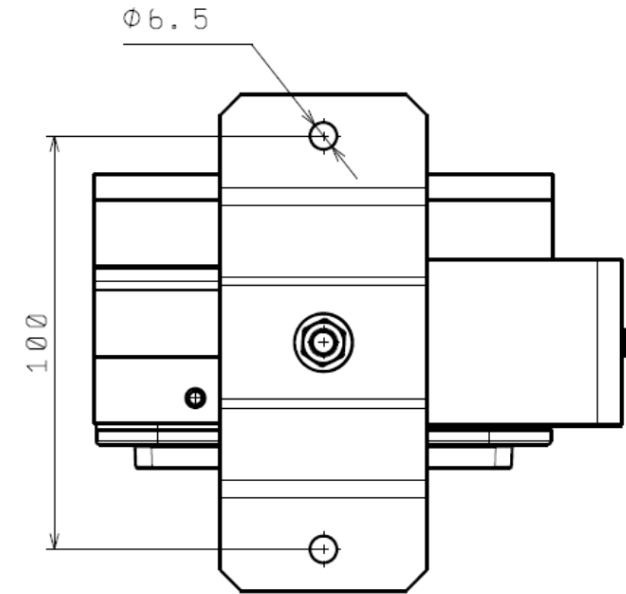
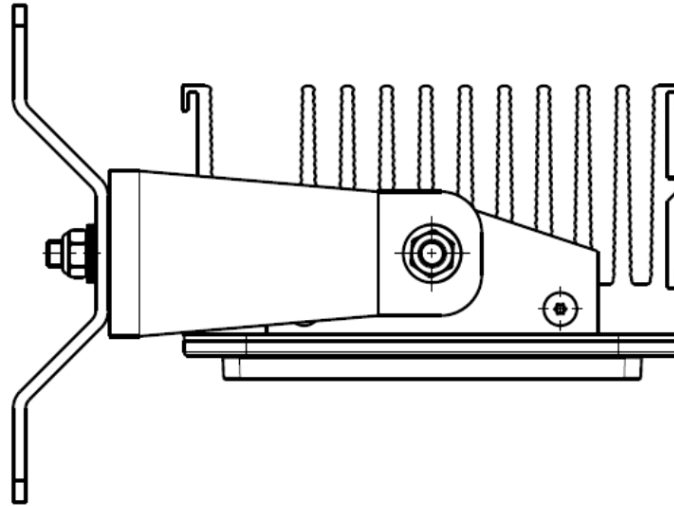
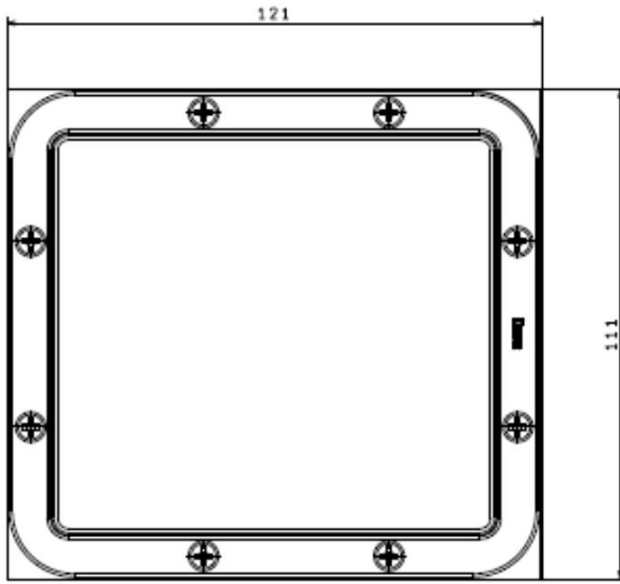
Accessories

Suspension kit

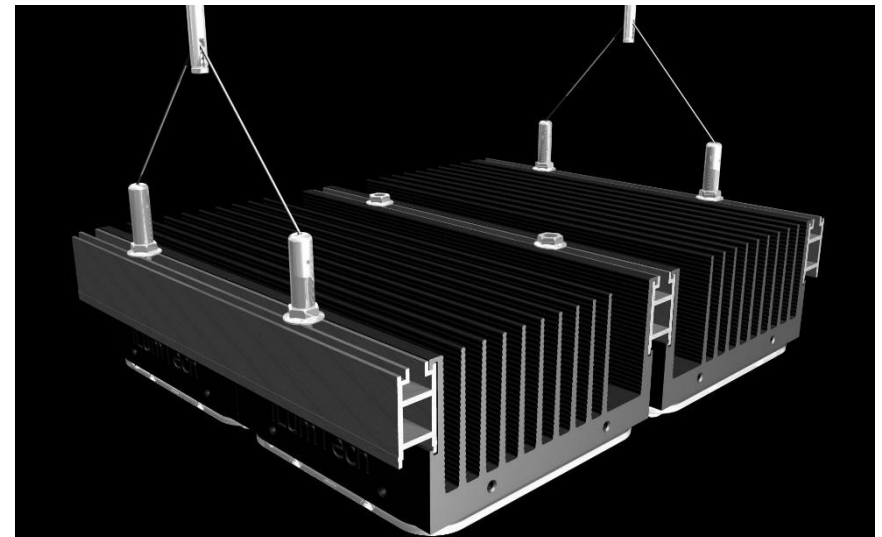
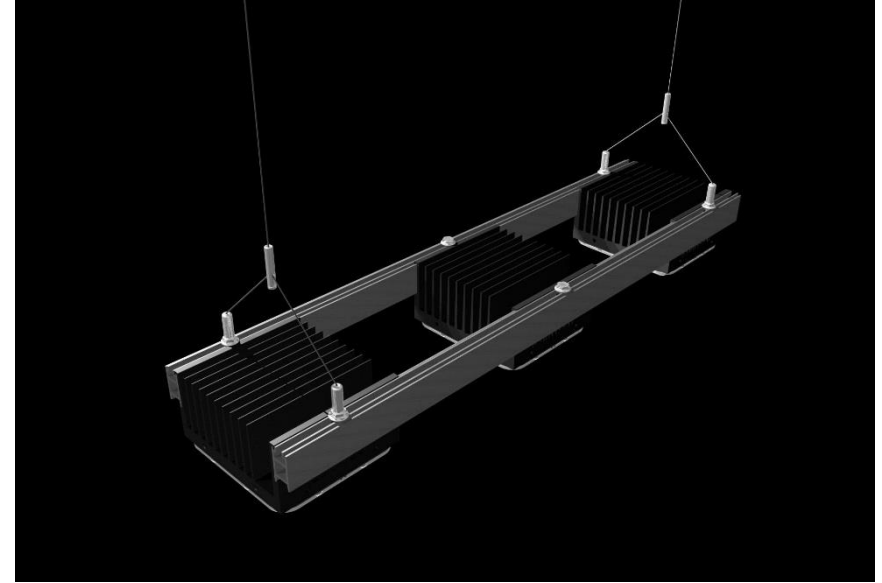
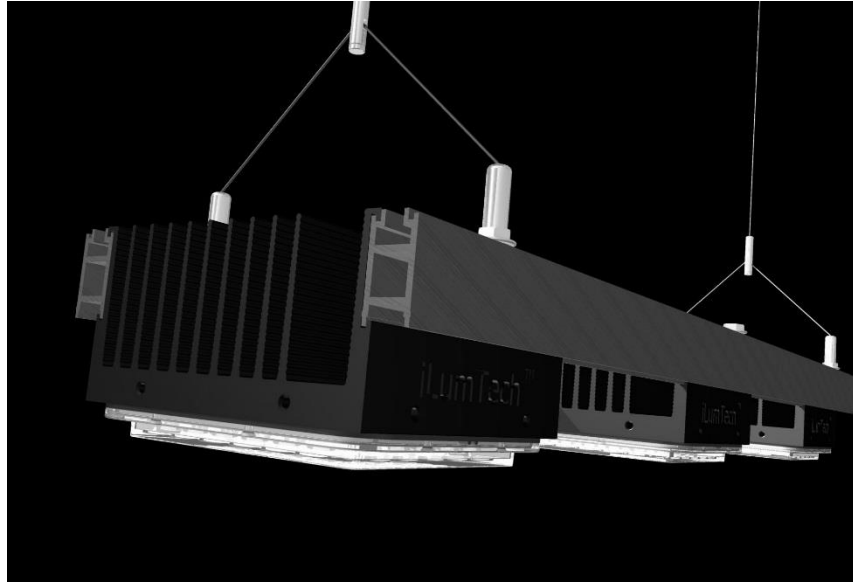
- Stainless steel wire and easy to mount kit



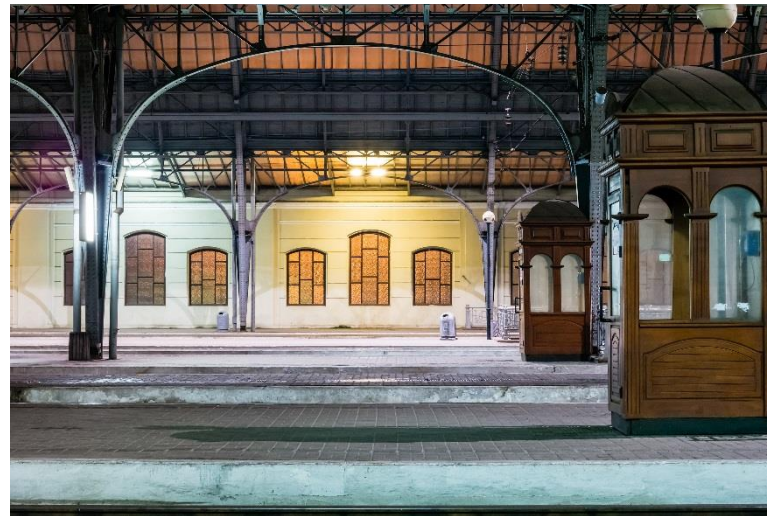
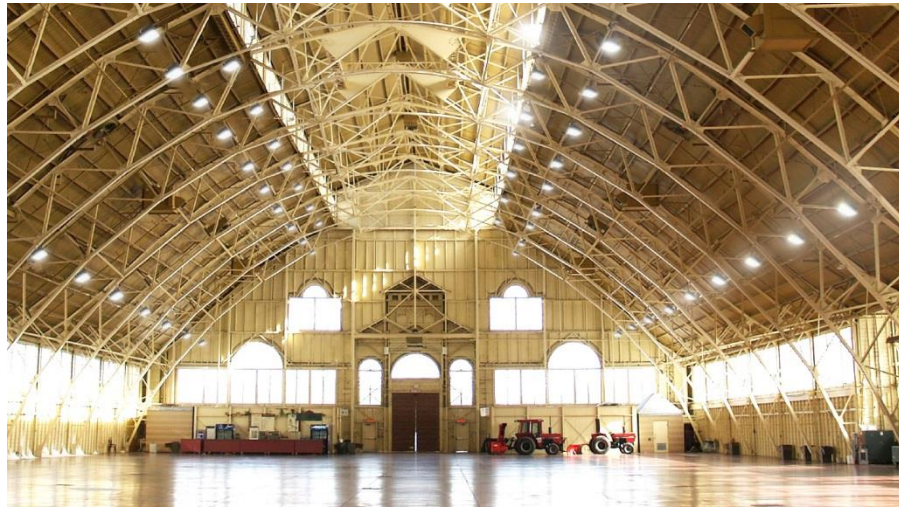
Dimensions



Examples of installation to rails



In reality



Thank you for
your attention!



iLumTechTM
innovation ahead