

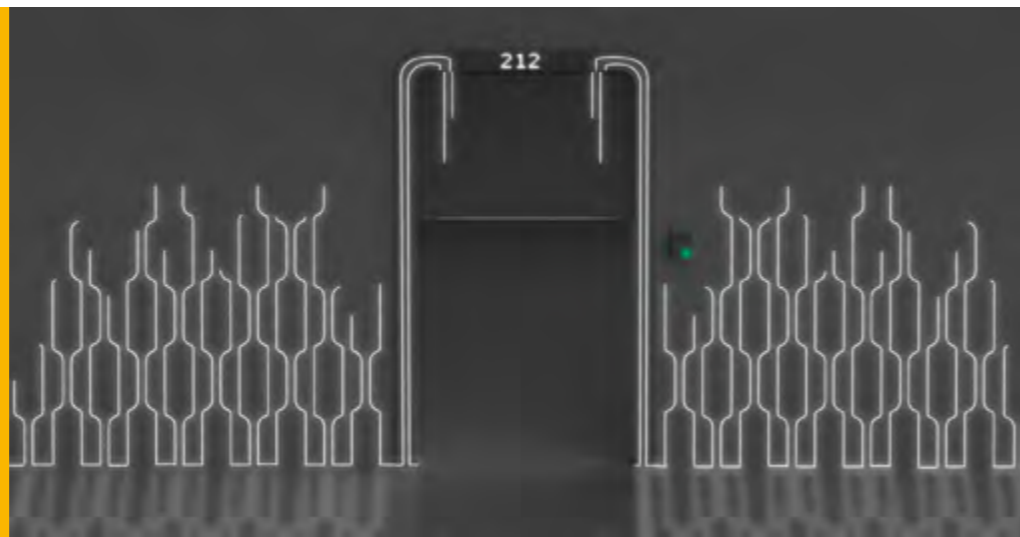
**Providing  
the perfect solution  
is not just our job.  
It is our passion.**

**iLumTech**<sup>™</sup>  
Innovation ahead

# INTRODUCTION

The iLumTech motto “innovation ahead” came to life around 15 years ago. Since then, we have been deeply involved in the development of luminaires and all connected design and engineering services. The result is that today, we are a market-leading independent research and development centre located in Central Europe.

With more than 60 employees, extensive expertise across optical, thermal, electronic, and mechanical engineering as well as software and hardware design, we are in a position to provide uniquely comprehensive services. We listen to and follow the needs of customers and use our experience to offer the most flexible support.



# OUR OFFER

## EXPERIENCED ENGINEERS

Our engineers have experience in every field related to the development of lighting devices and their parts.



## PROFESSIONAL OUTPUTS

Technical documentation and measurement reports are professionally completed and compiled ready for CE certification and entrance to serial production.

## CONFIDENTIAL ATTITUDE

We have a strict NDA approach to all our work. The confidentiality of information about our cooperation and the projects we work on together is an essential part of our service.



## FULLY EQUIPPED R&D

We have some of the best-equipped optical, thermal, electronic, and mechanical laboratories in Europe, and can provide customers with an array of tests side-by-side with many other services.



## FUTURE ORIENTED THINKING

Thanks to our experience in the LED industry, all our development and engineering is done with the future in mind.



## CONTINUOUS SERVICES

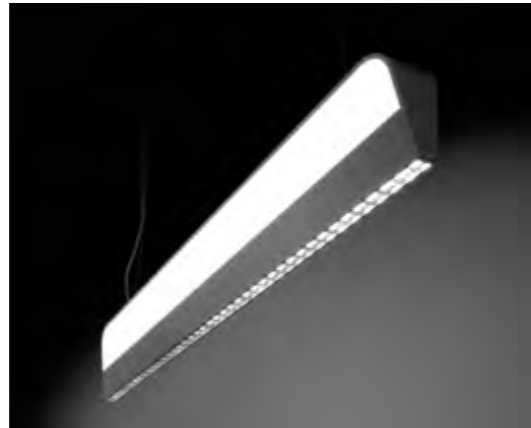
Product development is a never-ending process. We will continue with you on this journey through product optimisations, updates, and customisations.

# OUR SERVICES

## FULL LUMINAIRE DEVELOPMENT

**"Perfection has to do with the end product, but excellence has to do with the process." Jerry Moran**

Not every company has the time, capacity or resources to develop a new luminaire in-house. That's where we can help. We make it our business to support your business. By listening to your needs and understanding your business's marketplace, we can best apply our knowledge and experience to develop a final product that will give you a competitive advantage, save your time, and reduce your costs.



## INDUSTRIAL DESIGN

**"I think it is the responsibility of a designer to try and break rules and barriers." Gianni Versace**

Saint-Exupery said: "A designer knows he has achieved perfection not when there is nothing left to add, but when there is nothing left to take away." Good design is not only about what, but also why, and how; and not only about making things pretty, but also making them work. Our designers work closely with other departments to assure that the final product works, can be manufactured, and will be successful and unique.



## OPTICAL DESIGN

**"Music is the arithmetic of sounds as optics is the geometry of light." Claude Debussy**

You can always develop a product using commercially available optical systems. But, if you really want to be the manufacturer of successful, unique, and interesting luminaires while maintaining control over costs, there is only one way to proceed that makes sense: to develop and produce tailored systems. We have the skills and experience to support you throughout the entire process, from design through to tooling and production.



## THERMAL DESIGN

**"Nothing in life is certain except death, taxes, and the second law of thermodynamics." Seth Lloyd**

The most important part of thermal design is thermal simulation, without which many thermal solutions fail to deliver a required performance for an application. We can verify and compare thermal designs, optimise them for given luminaires, and so ensure that your thermal design will work.

## ELECTRONIC DESIGN

**"It's hardware that makes a machine fast. It's software that makes a fast machine slow."** Craig Bruce

Whether you need to develop new hardware, a PCB, or need support in software development, we will help you reach the finishing line. We have the expertise and experience to meet your exact needs, and can take a project from concept through production under one roof.



## MECHANICAL ENGINEERING

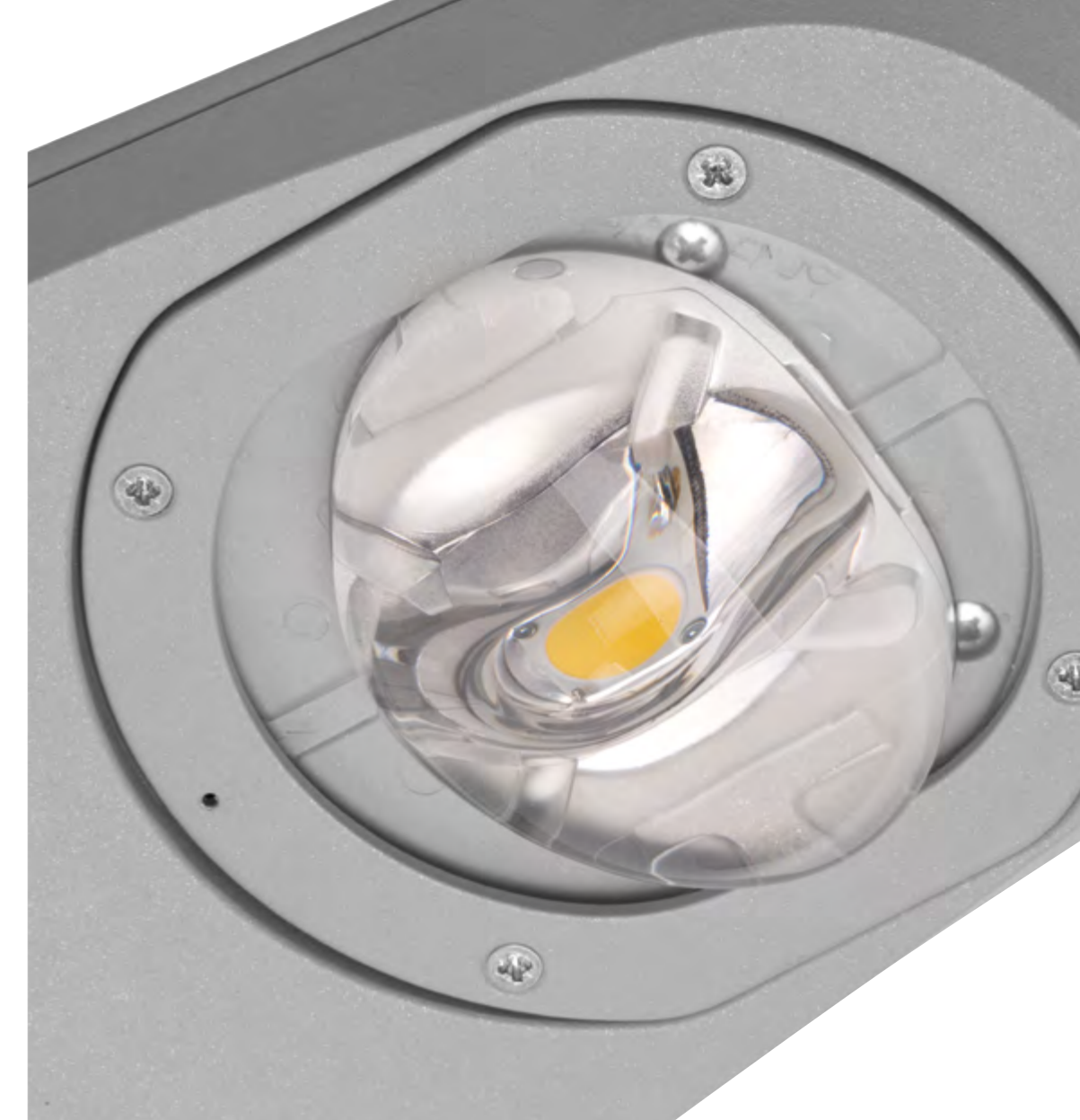
**"An optimist will tell you the glass is half-full; the pessimist, half-empty; and the engineer that it is twice the size it needs to be."** Anonymous

The experience and skill of our engineers combined with the power and flexibility of the latest 3D CAD software allows us to design and customise whole products or their individual parts. Our precise document management system assures that you will receive all proper documentation from which you can work in future.

## RAPID PROTOTYPING

**"I love taking an idea ... to a prototype and then to a product that millions of people use."** Susan Wojcicki

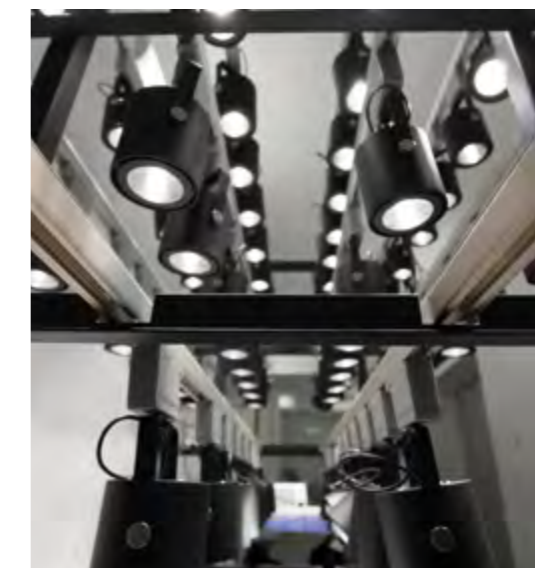
A prototype allows you to explore your ideas and to show the intention behind a feature or the overall concept to users before investing time and money in development. Our functional prototypes guarantee high flexibility and minimal investment as every product mechanism and property is checked before tooling.



## LABORATORY SERVICES & PRE-CERTIFICATION TESTS & MEASUREMENTS

**"Every line is the perfect length if you don't measure it."** Marty Rubin

Our laboratory services are designed to increase the speed and precision of product development and certification. What's more, performance of pre-certification tests acts as the base for CE declaration of conformity and assures positive results from the certification authority.



# OUR PRODUCTS

We have developed a range of devices for the professional lighting market with the aim of being inimitable and simple to install for lighting manufacturers, installers, electrical engineers, and even end users. All of the devices were created by our own optical, thermal, and electronic engineers, and produced locally. We are sure you will be satisfied with their user-friendly and intelligent functionality, offered at an appealing price level.



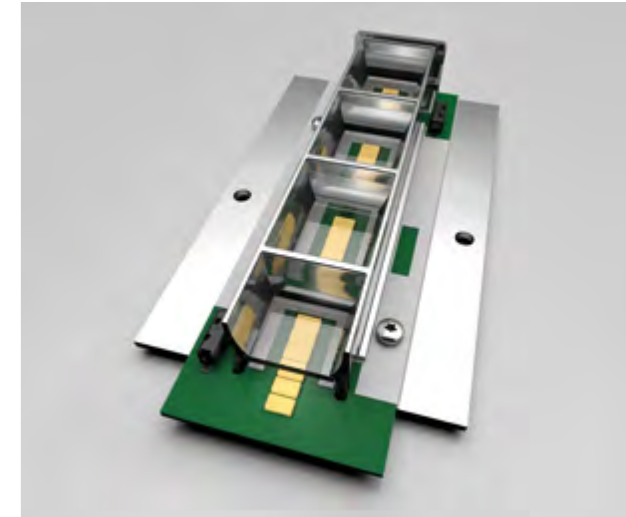
## CONNECTED LIGHTING

Practical and simple to use devices that are easy to incorporate in our everyday lives across work, rest, and play, and built around the DALI protocol for the control and commissioning of luminaires.



## LED UNITS

LED Units that offer the attractive feature of requiring no further development as everything is included in one module, making them an ideal choice for luminaire manufacturers and those seeking devices for bespoke solutions.



## OPTICAL SOLUTIONS

Our range of optical solutions includes complete lens systems, reflectors, and customisable diffusers.

Our services and products are built around your needs and wishes. Everything else is just general guidance. Let us know what you need, how we can support you, and where you can utilise our capabilities. Feel free to contact us with any question and benefit from our fast responses, flexibility, and customer-oriented principles.

**iLumTech**<sup>™</sup>  
i n n o v a t i o n   a h e a d

**HEAD OFFICE**

iLumTech  
906 02 Dojč 419  
Slovakia  
Email: [info@ilumtech.eu](mailto:info@ilumtech.eu)  
[www.ilumtech.eu](http://www.ilumtech.eu)

